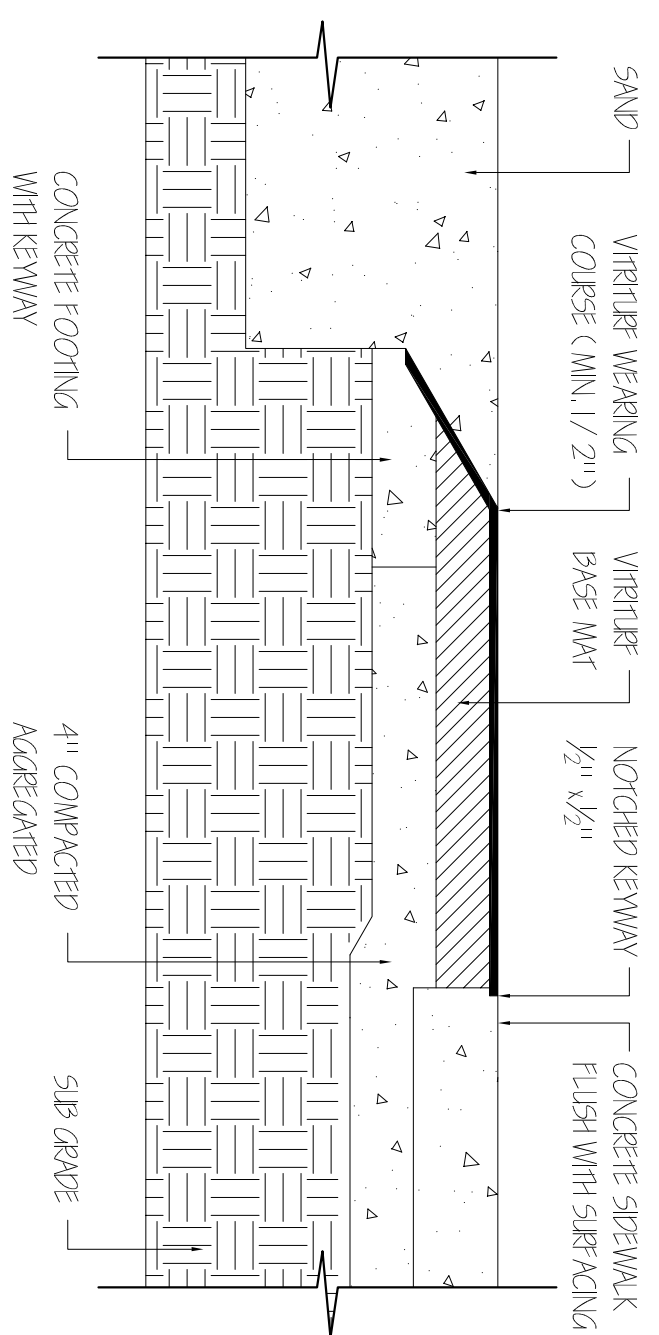


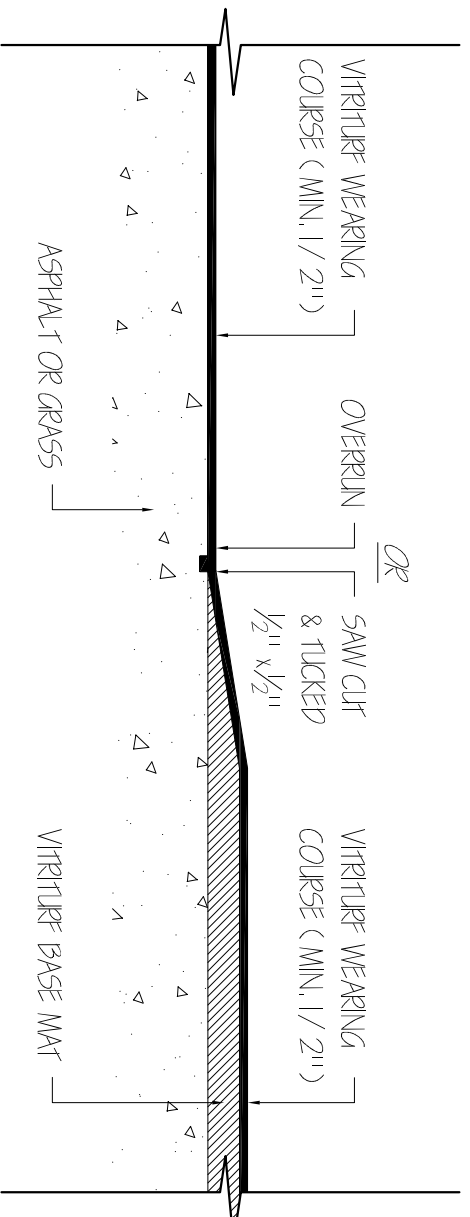
VITRITURF®

COMBINED SEAMLESS FLOORING SYSTEM



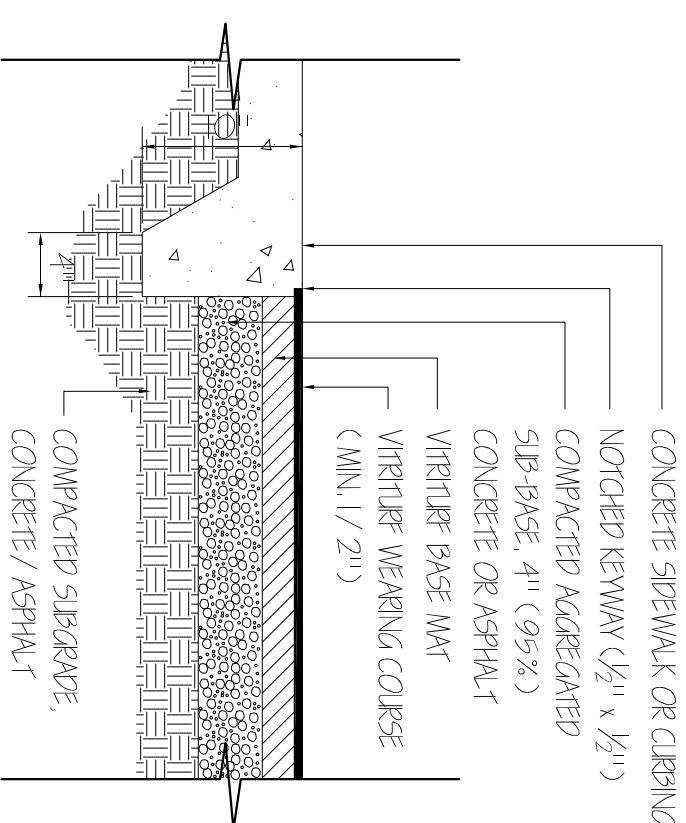
SECTION

SCALE: 1" = 1'-0"



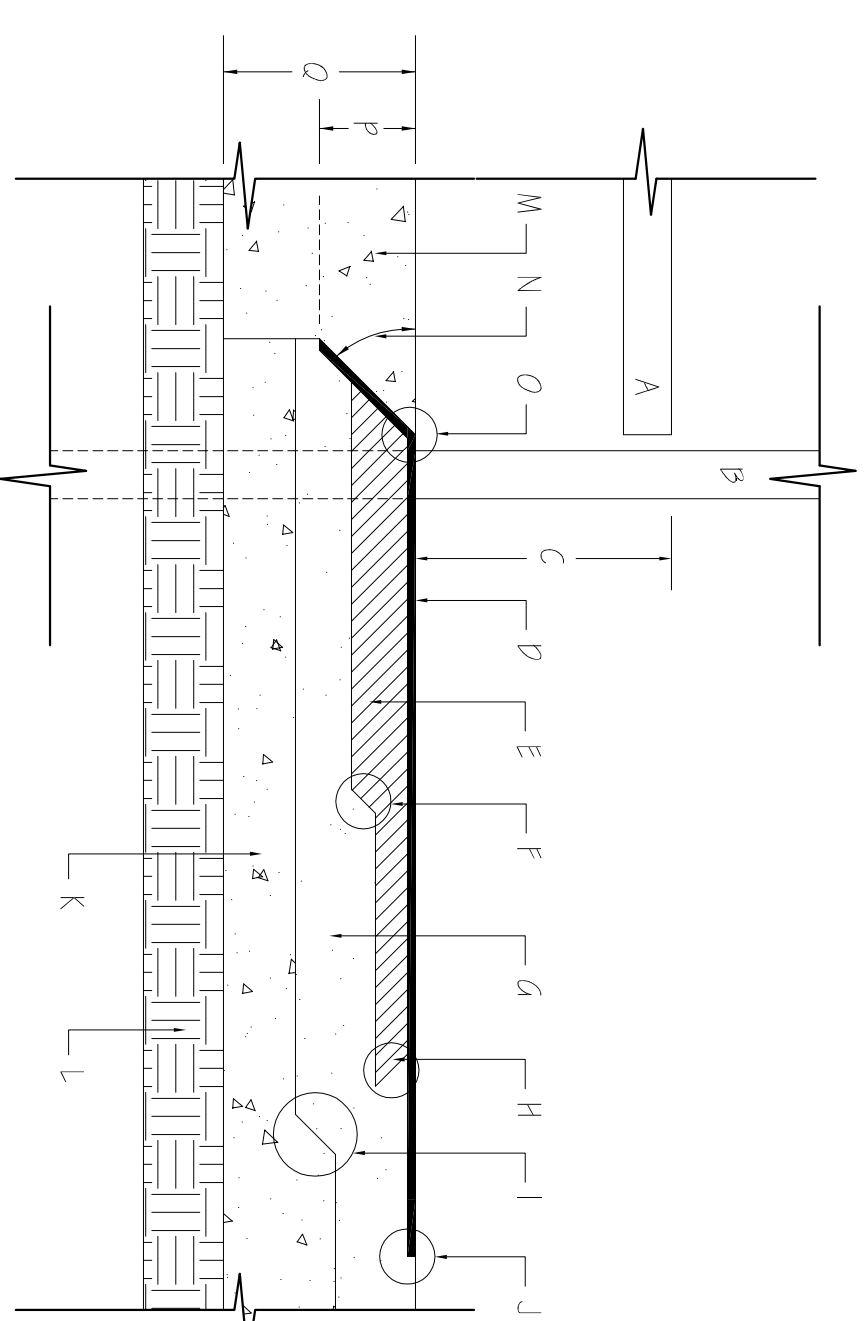
OPEN PERIMETER EDGE DETAIL

SCALE: 1" = 1'-0"



CURB DETAIL

SCALE: 1" = 1'-0"



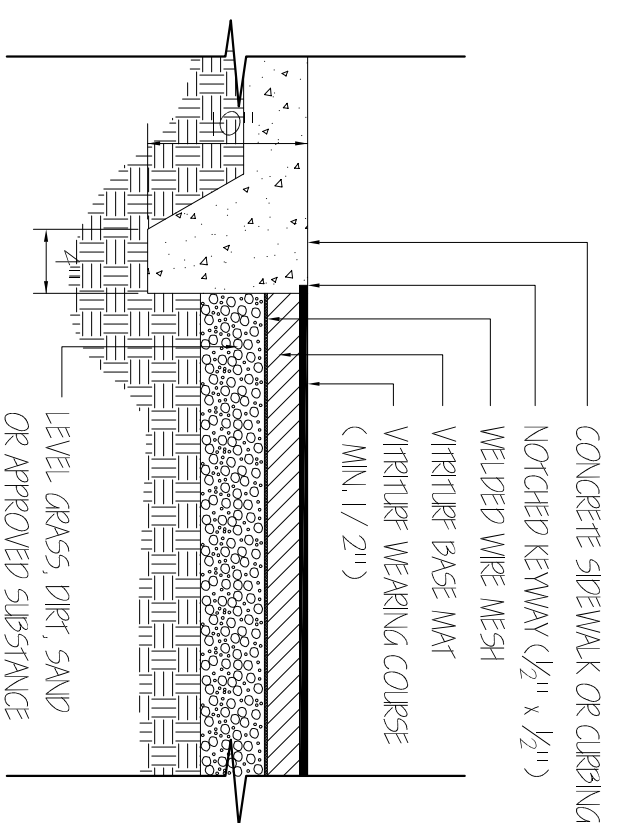
SECTION

SCALE: 1" = 1'-0"

- A. Transfer deck 1/4" - 1/8" above finish grade.
- B. Post, typical placement under transfer area.
- C. Distance between transfer and VITRITURF surface must be 1/4" - 1/8".
- D. Weirno. Course of VITRITURF 1/2" minimum thickness.
- E. VITRITURF base mat.
- F. Typical transition between two layers of cushion coat.
- G. Base material, see VITRITURF specifications for options.
- H. Typical transition from base mat to weirno. course.
- I. Typical transition from base mat to weirno. course.
- J. Typical transition between VITRITURF and base material, 90° (Kerway to be 1/2" x 1/2").
- K. Sub-base, compacted aggregate, varies in depth with the specifications for the base material.
- L. 5/8" grade, overall 1/2" below finish grade.
- M. Base gravel, sand, or other resilient surface.
- N. Angle of lead to be 45° unless otherwise noted.
- O. VITRITURF should be level with base fill 1/4" below VITRITURF at transfer area.
- P. Vertical dimension of lead should be 6" 1/2" typical.

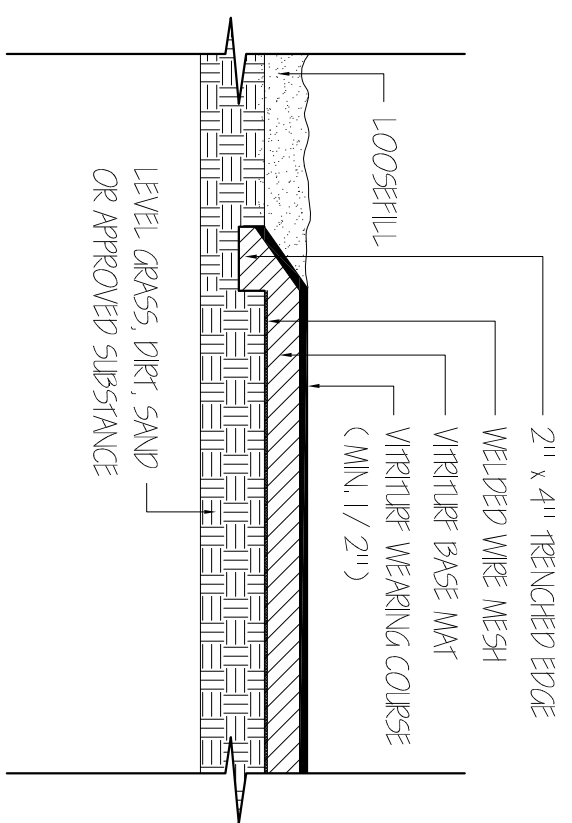
VITRITURF® - TK SYSTEM

COMBINED SEAMLESS FLOORING SYSTEM



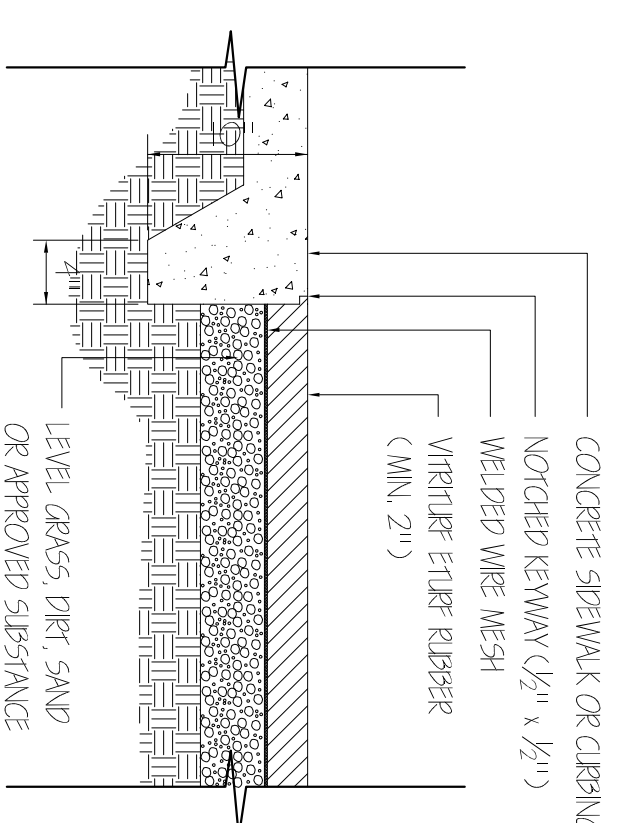
CURB DETAIL (VITRITURF TK SYSTEM)

SCALE: 1" = 1'-0"



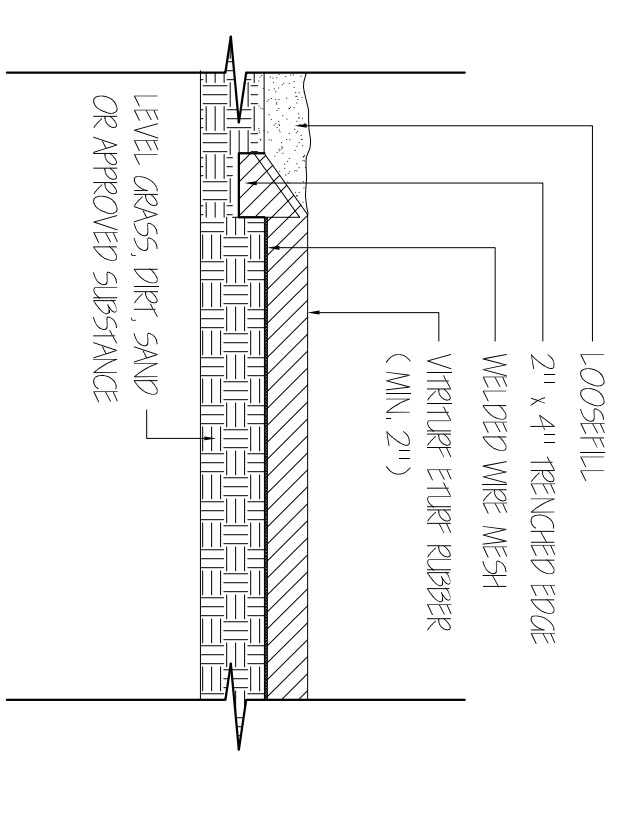
SECTION (VITRITURF TK SYSTEM)

SCALE: 1" = 1'-0"



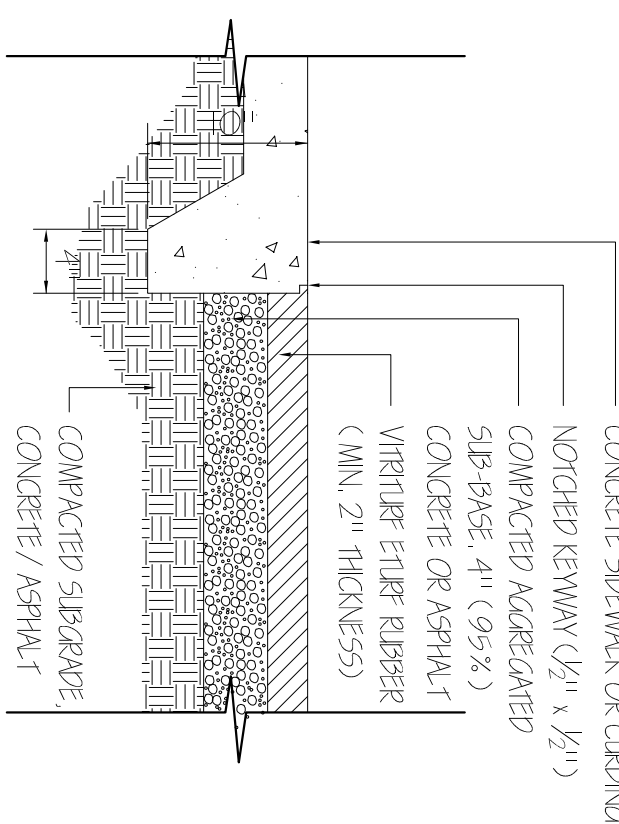
CURB DETAIL (ETURF / TK SYSTEM)

SCALE: 1" = 1'-0"



SECTION (ETURF / TK SYSTEM)

SCALE: 1" = 1'-0"

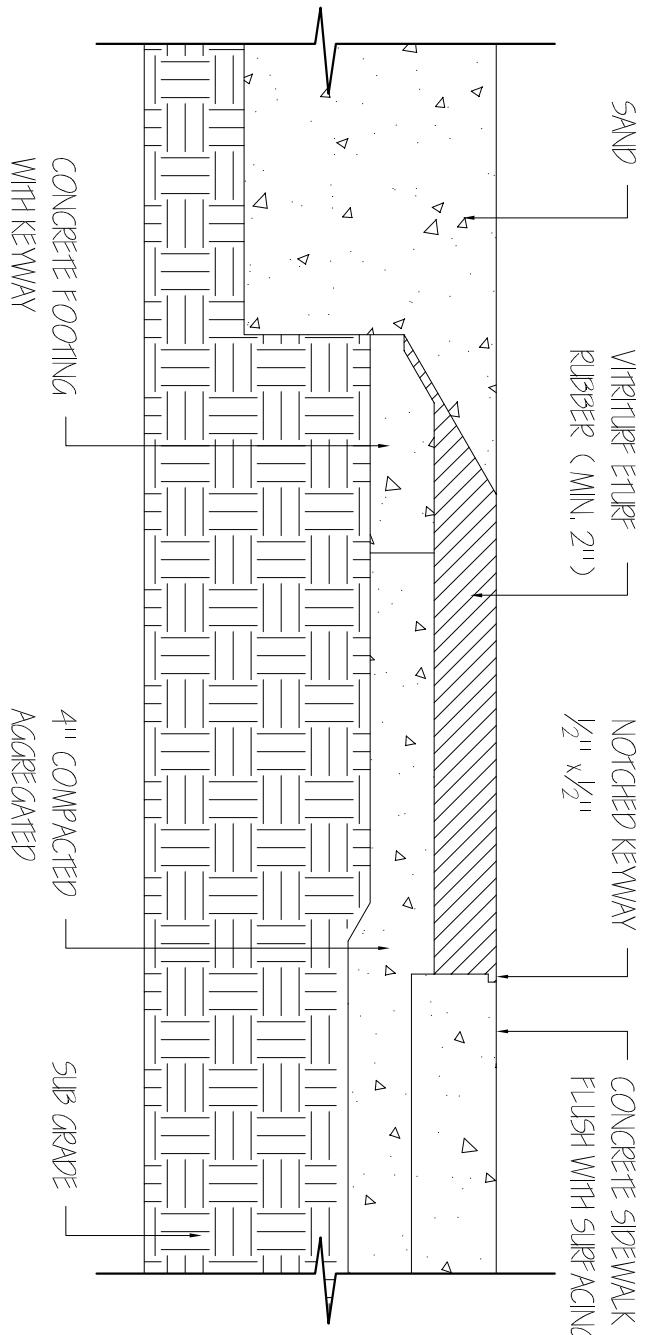


CURB DETAIL (VITRITURF ETURF)

SCALE: 1" = 1'-0"

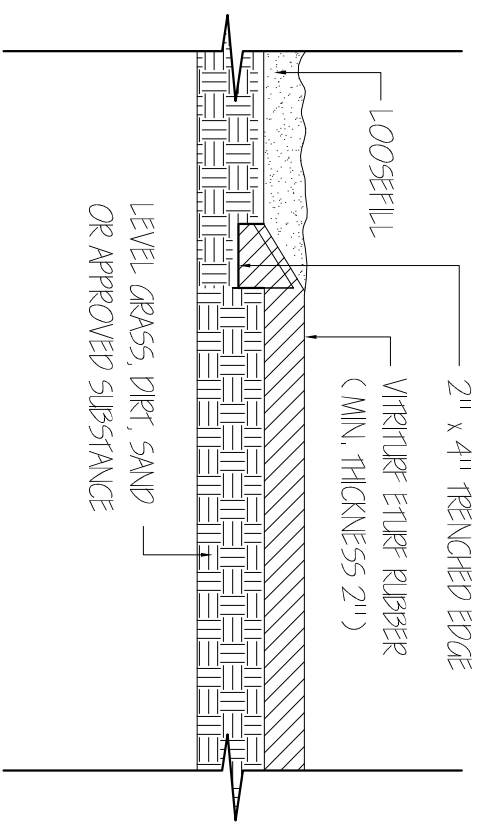
VITRITURF® - ETURF SYSTEM

COMBINED SEAMLESS FLOORING SYSTEM



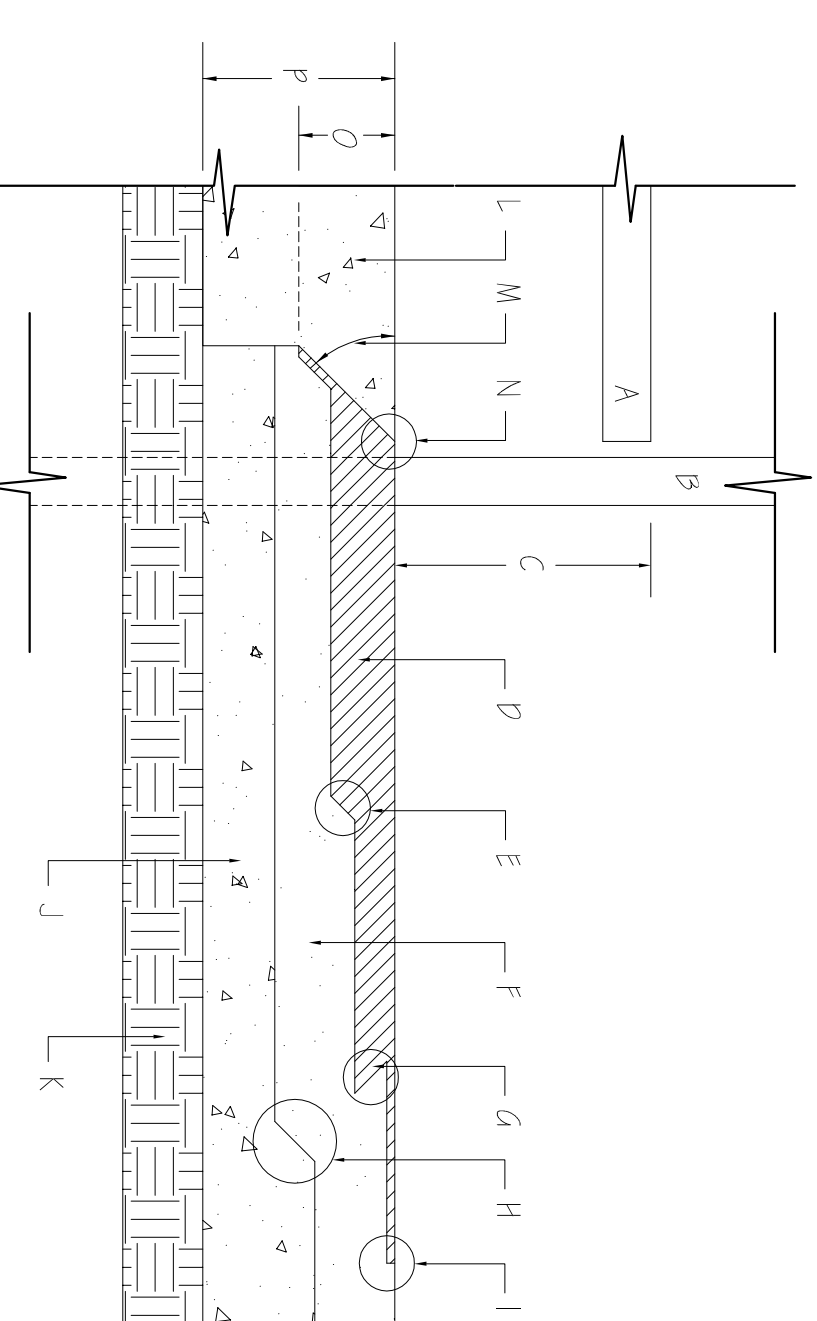
SECTION (VITRITURF ETURF SYSTEM)

SCALE: 1" = 1'-0"



SECTION (VITRITURF ETURF SYSTEM)

SCALE: 1" = 1'-0"



SECTION (VITRITURF ETURF SYSTEM)

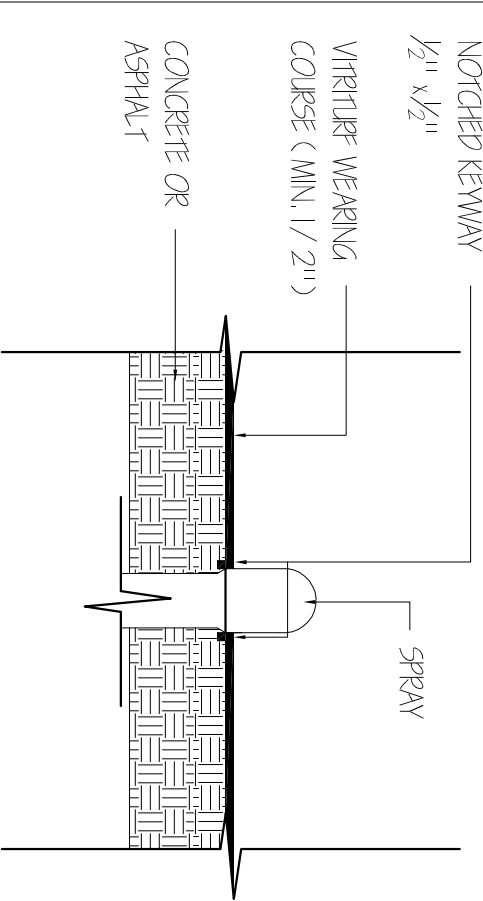
SCALE: 1" = 1'-0"

- A. Transfer deck 1/4" - 1/8" above finish grade.
- B. Post, typical placement under transfer area.
- C. Distance between transfer and VITRITURF surface must be 1/4" - 1/8".
- D. VITRITURF ETURF SYSTEM Rubber to be min. 2" thick.
- E. Typical transition between two layers of cushion coat.
- F. Base material, see VITRITURF specifications for options.
- G. Typical transition from base mat to weirno. course.
- H. Typical transition from base mat to weirno. course.
- I. Typical transition between VITRITURF and base material, 90° (Kerway to be 1/2" x 1/2").
- J. Sub-base, compacted aggregate, varies in depth with the specifications for the base material.
- K. 5/8" grade, overall 1/2" below finish grade.
- L. Paragravel, sand, or other resilient surface.
- M. Angle of lead to be 45° unless otherwise noted.
- N. VITRITURF should be level with base fill 1/4" below VITRITURF at transfer area.
- O. Vertical dimension of lead should be 6" 1/2" typical.
- P. Distance for base footno and resilient surface, 1/2" typical.

OPEN PERIMETER EDGE DETAIL (VITRITURF ETURF SYSTEM)

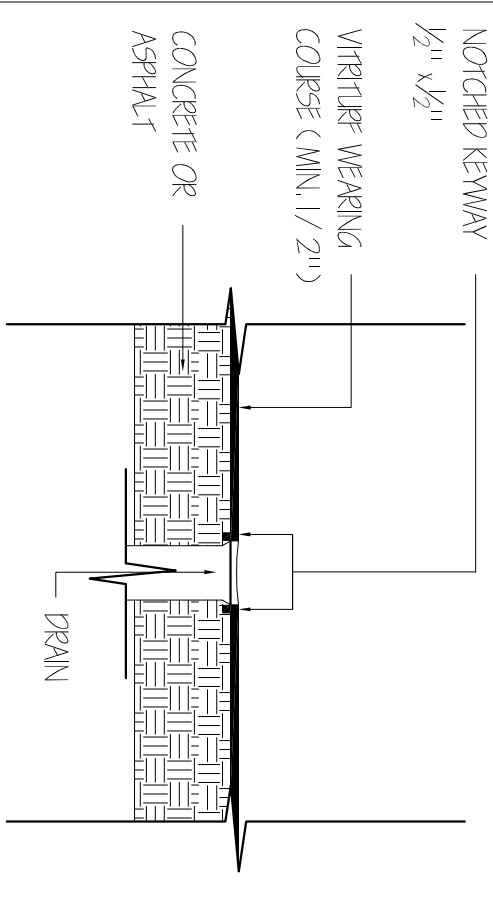
SCALE: 1" = 1'-0"

- DRAIN SYSTEM -



SPRAY SECTION

SCALE: 1" = 1'-0"



DRAIN SECTION

SCALE: 1" = 1'-0"

DRAWING NO.

DESIGNED BY	VITRITURF	DATE	2009-2010
SCALE	AS NOTED	SHEET NO.	
PROJECT NUMBER	DETAIL	1 OF 1	

VITRITURF
CUSTOMER SEAMLESS FLOORING SYSTEM

VITRITURF

SHEET A-1

CONSULTING SERVICES
DRAWINGS FOR REFERENCE ONLY

T. 631.231.1300
WWW.VITRITURF.COM
VTURF@AOL.COM

TITLE

SPECIFICATIONS

DETAIL DRAWINGS

NO.	REVISIONS
1	10
2	11
3	12
4	13
5	14
6	15
7	16
8	17
9	18
10	19
11	20
12	21
13	22
14	23
15	24
16	25
17	26
18	27

W.C. NOTES